

Canon



4K



“The easy-access controls on the Canon EOS 5D Mark IV let me fine-tune my exposures quickly and easily—helping me to create my own unique visions.”



Rick Sammon
Canon Explorer of Light

“I have owned every camera in the EOS 5D line and the new EOS 5D Mark IV has everything a professional needs to create exceptional images, every time. Whether shooting video or stills the Canon EOS 5D Mark IV is simply the best wedding camera on the planet.”



Clay Blackmore
Canon Explorer of Light





EF 180mm f/3.5L Macro USM, 1/200 sec. f/11 ISO 100
©Lindsay Adler



EF 24-70mm f/2.8L II IS USM, 1/200 sec. f/11 ISO 200
©Lindsay Adler

“The EOS 5D Mark IV camera allowed me to capture the vibrant colors, intricate details and dramatic movement that are a hallmark of my style.”



Lindsay Adler
Canon Explorer of Light

“Shooting with the Canon EOS 5D Mark IV has provided me with some of the best images I’ve captured to date in terms of dynamic range.”



Ken Sklute
Canon Explorer of Light





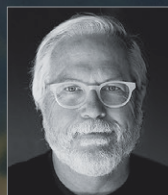
“Outdoor photographers will really appreciate the new EOS 5D Mark IV camera from Canon, as it offers stunning high resolution, superb detail in the shadows, and impressive autofocus speed and frame rate.”



George D. Lepp
Canon Explorer of Light



“Utilizing the DAF on the EOS 5D Mark IV provided spectacular results shooting video, making this the perfect camera to pair with a gimbal rig. It provides me with unwavering confidence that I’ll get the shots I need.”



Bruce Dorn
Canon Explorer of Light

Behind the Scenes of “The Search for Secret Waters”
4K Frame Capture – shot using the EOS 5D Mark IV



SEE LEGENDARY

STELLAR IMAGE QUALITY



EF 100mm f/2.8L Macro IS USM, 1/200 sec. f/3.2 ISO 400

© Denis Reggie

30.4 MP Full-frame Sensor

The EOS 5D Mark IV camera has a full-frame, high-speed CMOS sensor that delivers beautiful images of weddings, wildlife, sports and more. Measuring approximately the same size and ratio as a 35mm film frame, it records approximately 30.1 Megapixels at normal ISOs of up to 32000. It also captures tremendous still and 4K video clips suitable for significant post-processing, retouching and cropping. This brilliant sensor adds Dual Pixel CMOS AF capabilities, which enables

Dual Pixel CMOS AF



Set the Movie Servo AF speed in the menu to adjust AF speed and/or subject tracking sensitivity, and refine the camera's focus tracking responsiveness.

continuous automatic AF and AF tracking at the pixel level at light levels as low as EV -4. This enhances overall camera operation in more places and more lighting situations for sharp still images and smooth, precise focus transitions in videos.

ISO 100-32000 (Expandable to 50-102400)

Featuring an ISO range of 100-32000 (expandable to 50-102400), the EOS 5D Mark IV camera thrives at low-light photography. Whether shooting at night, in inclement weather or even in dimly lit auditoriums, the EOS 5D Mark IV camera's sensor has an improved S/N ratio plus an improved noise-processing algorithm to deliver high-level light sensitivity, without compromising image quality. In low light, or when simply suppressing camera shake blur, the EOS 5D Mark IV camera's extended ISO range helps it to excel in a wide range of lighting situations.



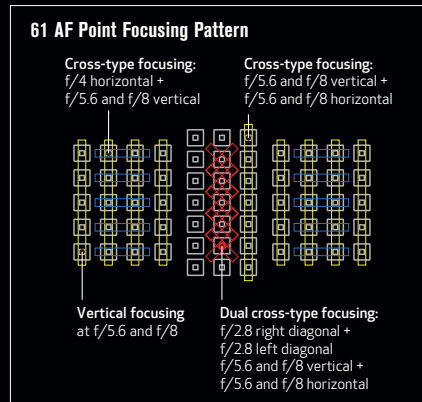
In-camera Digital Lens Optimizer and Diffraction Correction

The EOS 5D Mark IV camera is equipped with a number of in-camera optical correction functions, previously available only using Digital Photo Professional software, for more clarity, less distortion and less light fallout in the corners of the frame. It comes preloaded with aberration data particular to specific lenses, helping the EOS 5D Mark IV camera to correct images in-camera with virtually no delay. Able to correct for peripheral brightness and chromatic aberration, the EOS 5D Mark IV also features distortion correction to help remedy barrel and pincushion distortions and diffraction correction to correct the blurring effects from diffraction that can be created when capturing an image at a small aperture. Effectively compensating for optical quirks from the lens, the EOS 5D Mark IV produces clean files that are ready for print or display, quickly and easily.

Up to 7.0 fps* Continuous Shooting

The EOS 5D Mark IV camera is designed to capture the action with virtually instantaneous response and performance at up to 7.0 fps*, even at full resolution. A cam-operated Mirror Vibration Control System with a high-torque motor helps suppress mirror impact for stable, high-speed shooting, while the AF and AE systems help ensure accurate exposure and focus tracking, even at high speed. Whether immortalizing a bird in flight or a father's first dance with the bride, the EOS 5D Mark IV camera delivers a combination of performance and image quality that's ideally suited to the needs of advanced photographers.

INTELLIGENT FEATURES FOR BRILLIANT RESULTS



61-point AF

The EOS 5D Mark IV has a new AF sensor, with 61 AF points and up to 41 cross-type AF points available to deliver excellent accuracy and performance. It covers a broader vertical area of the image than its predecessor, and improves upon low-light sensitivity as well as AF with tele extenders at f/8 maximum effective apertures.

Intelligent Viewfinder II

For ease and comfort in all day shooting, the EOS 5D Mark IV camera's Intelligent Viewfinder II offers a bright, customizable view that displays a variety of camera settings.

Anti-flicker Function

Especially helpful when shooting under fluorescent lights, the EOS 5D Mark IV camera's anti-flicker function analyzes a light source's flicker to capture subjects when they're most likely to be properly illuminated.



Anti-flicker shooting OFF

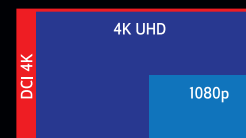
Anti-flicker shooting ON

4K CAPTURE, IN HAND

4K Video

Capable of recording DCI standard 4K (Motion JPEG) videos of 4096 x 2160 pixels at up to 30 fps, the EOS 5D Mark IV

is an extraordinary camera for movies, news, weddings and more. It can also shoot Full HD



video at up to 60 fps and HD video at up to 120 fps, and supports both MOV and MP4 formats for easy distribution or use in editing software.

4K Frame Capture**

The EOS 5D Mark IV camera can save individual frames from 4K video as new 8.8 million pixel still image files, which is easily done using on-screen commands during video playback.

Dual Pixel AF with Touch Panel Operation

Featuring Dual Pixel CMOS AF and Touch AF, the EOS 5D Mark IV camera delivers quick, smooth AF for excellent subject tracking while shooting video. Used in conjunction with the touch screen, it's easy to select the location and size of the AF frame, which can be especially useful when the subject is off center or for dramatic focus shifts.

PHENOMENAL PERFORMANCE ANYWHERE

IPTC Function

Up to 39 possible types of IPTC data can be added to each image. A well-established staple of the photojournalism industry, this IPTC data provides many EOS 5D Mark IV camera users the ability to add detailed information to each image, including caption data.

Enhanced Wireless Functionality

Built-in Wi-Fi*** connectivity*** allows easy set-up for remote operation, providing control of select camera settings from compatible mobile devices. Image review and transfer are also fast and convenient, without even having to take the camera out of its bag.

Built-in GPS^

Built-in GPS^ helps photographers and filmmakers automatically tag their images with location data.

This sophisticated system can also time sync with Universal Time Code (UTC) via satellites around the globe.

Dust- and Drip-resistant, Lightweight Design^^

The EOS 5D Mark IV camera is designed to perform where the action is, no matter the conditions. It's lightweight, portable and features a robust structural design that enhances its dust- and water-resistance with numerous seals around the camera's buttons, ports and lens mount.^^

Improved Controls

The EOS 5D Mark IV camera incorporates a number of refinements for reliable, durable operation, such as moving the remote controller



Remote controller port



Dual Pixel RAW: Unique Post-shooting Treatment

The EOS 5D Mark IV camera's Dual Pixel CMOS AF system enables capture of Dual Pixel RAW (DPRAW) files^^^, which offers photographers a number of functions for post-production adjustment with Canon's Digital Photo Professional software.

Image Micro-adjustment

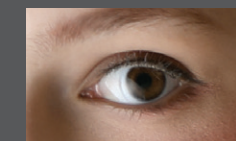
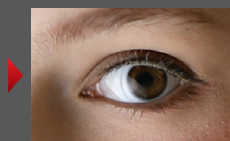
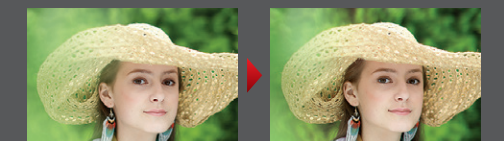


Image Micro-adjustment maximizes sharpness in detail areas.



Bokeh Shift



Bokeh shift creates more pleasing soft focus areas.

SPECIFICATIONS

Autofocus System	61-point Area AF Sensor with full time red illumination in viewfinder; TTL secondary image-forming phase-difference detection system with AF-dedicated CMOS sensor that has max. of 41 cross-type points (lens dependent); One-Shot and AI Servo AF III with EOS iTR AF; Manual focusing confirmation possible with EF lenses; Automatic or manual focus point selection
Image Processor/Image Sensor	Dual DIGIC 6+ and dedicated DIGIC 6 for metering / 36.0 x 24.0mm, Single-plate CMOS Sensor with Ultrasonic Vibration Sensor Cleaning
Crop Factor	1.0x (Full-frame)
Special Features	<ul style="list-style-type: none"> • 30.4 Megapixel Full-frame CMOS sensor • Built-in 3.2" Clear View LCD II monitor (approx. 1,620,000 dots) • 17 Custom Functions in 5 groups • Dual Pixel CMOS AF • 1 Multi-controller • Custom Quick Control Dial • Electronic Level • Simultaneous RAW + JPEG image capture • HDR Shooting with 5 effects • Multiple Exposures • Diopter adjustment • Depth-of-field preview • FE Lock • Mirror Lock • In-camera RAW processing • Star rating system • USB 3.0 SuperSpeed compatible • Magnesium alloy body • Picture Style (9 settings) • Dust removal feature • Live View Function & Face Detection Live mode • All-I or IPB Compression • 4K Video with Still Frame Grab** • Full HD Video • Intelligent Viewfinder II • Lens aberration correction • Anti-flicker feature • Built-in Wi-Fi*, NFC and GPS†
Video Recording Size	4096 x 2160 (4K): 30p (29.97) / 24p / 23.98p, 1920 x 1080 (Full HD): 60p (59.94) / 30p (29.97) / 24p / 23.98p, 1280 x 720 (HD): 120p (119.9)
Number of Focusing Points	61 selectable AF points, 41 cross-type points (lens dependent); 5 dual cross-type AF points, 61 AF points at f/8
ISO Range	(Still) ISO 100–32000, L: 50, HI: 51200, H2: 102400 (4K Video) ISO 100–12800, H: 16000/20000/25600/32000, HI: 51200 (Full HD Video) ISO 100–25600, H: 32000, HI: 51200
Recording Media	CF Card (Type I, UDMA 7 supported), SD/SDHC/SDXC (UHS-I compatible) Memory Cards
4K Recording Media	See www.usa.canon.com/5DMarkIV for current specifications
Maximum Frames Per Second	Single, 7.0 fps*, 3.0 fps (low-speed and silent continuous)
Shutter Speeds	30–1/8000 sec. & Bulb; manually settable in 1/3- or 1/2-stop increments
Autofocus Sensitivity	Center AF Point: EV -3–18 (at ISO 100 with f/2.8 lens)

Shutter	Vertical-travel, mechanical, focal-plane shutter with all speeds electronically controlled
Maximum Flash Synchronization Speed	Up to 1/200 sec.; high-speed sync. available with all EX-series Speedlite flashes.
Metering System	TTL full-aperture metering: <ul style="list-style-type: none"> • 315-zone Evaluative metering • Approx. 6.3% Partial metering • Approx. 2.7% Spot metering • Center-weighted average metering
Metering Sensitivity	EV 0–20 (at 73°F/23°C, ISO 100)
Exposure Compensation	Manual: +5 stops in 1/3-stop or 1/2-stop increments; AEB: ±3 stops in 1/3-stop or 1/2-stop increments
Flash Exposure Compensation	Up to ±3 stops in 1/3-stop or 1/2-stop increments
AE Lock	Yes
Exposure Modes	<ul style="list-style-type: none"> • Scene Intelligent Auto • Program AE (shiftable) • Shutter Speed-priority AE (Safety shift possible) • Aperture-priority AE (Safety shift possible) • Manual Exposure • Bulb • Custom (Three Custom shooting modes)
Viewfinder	Fixed eye-level pentaprism
Viewfinder Coverage	Approx. 100% horizontal and vertical at 0.71x
Viewfinder Information	Inside the picture area: 61 focusing points, 1.3% Spot metering circle. Displayed at the bottom of the viewing area: Numeric and textual information with 7-segment LCD <ul style="list-style-type: none"> • AF point information • AF operation† • Area AF frame • Metering mode† • Spot metering circle • Image quality† • Electronic level (dedicated indicator)† • Digital Lens Optimizer† • Battery (remaining capacity)† • Dual Pixel RAW setting (shooting)† • Shooting mode† • Flicker detection† • White balance‡ • Warning symbol • Drive mode‡ • AF status indicator † You can select whether or not to display the marked items [Show/hide in viewfinder].
Focusing Screens	Intelligent Viewfinder II with adaptable LCD overlay displaying Electronic Level (non-interchangeable)
Self-timer	Electronically controlled with 2- or 10-second delay
Body Dimensions (W x H x D)	Approx. 5.93 x 4.58 x 2.99 in. / 150.7 x 116.4 x 75.9mm
Weight (CIPA standards)	Approx. 31.39 oz. / 890g



* Continuous shooting speed may vary depending on the shutter speed, the aperture, the lens being used, the battery charge and various camera settings.
 ** Saving a still image from a single movie frame does not result in the same image quality as a normal still image.
 *** Compatible with iOS* versions 8.0/8.1/8.2/8.3/8.4/9.0/9.1/9.2/9.3, Android** smartphone and tablet versions 4.1/4.2/4.3/4.4/5.0/5.1/6.0. Data charges may apply with the download of the free Canon Camera Connect app. This app helps enable you to upload images to social media services. Please note that image files may contain personally identifiable information that may implicate privacy laws. Canon disclaims and has no responsibility for your use of such images. Canon does not obtain, collect or use such images or any information included in such images through this app.
 † In certain countries and regions, the use of GPS may be restricted. Therefore be sure to use GPS in accordance with the laws and regulations of your country or region. Be particularly careful when traveling outside your home country. As a signal is received from GPS satellites, take sufficient measures when using in locations where the use of electronics is regulated.
 ‡ Compartment covers, terminal covers or any other camera components that can be opened must be closed properly to enhance dust-resistant and drip-resistant performance.
 ††† When lens diaphragm setting is fully open, adjustment volume and compensation effect are emphasized. Sufficient adjustment volume and compensation effect may not be achieved, depending on lens in use and shooting conditions. Adjustment volume and compensation effect vary depending on camera position (landscape or portrait).
 Certain images and effects simulated. Products not shown to scale. Not responsible for typographical errors.

EOS 5D Mark IV