

**EPSON®**  
EXCEED YOUR VISION

T

SureColor® T-Series

Epson SureColor T3000

Epson SureColor T5000

Epson SureColor T7000



# T

SureColor T-Series

## Precision. Performance. Brilliance.

At the beginning, one thing was clear. If Epson were to develop an all-new inkjet plotter, it would have to be unique. It would have to be an Epson. And being one of the most respected Precision Engineering companies in the world — it got personal.

### Introducing the Epson® SureColor T-Series

Developed using the latest advancements in performance imaging, like our exotic Epson® MicroPiezo® TFP® print head, along with our breakthrough pigment ink technology — Epson UltraChrome® XD — the all-new SureColor T-Series could be the way you'll print your next big idea.



# 24-Inch

SureColor T3000



24"

# 36-Inch

SureColor T5000



36"

# 44-Inch

SureColor T7000



44"

# T-Series

Highlight Details

Specs

Feature	Description
<b>Dimensions and Weight</b>	SC-T3000   42" (W) x 32" (D) x 45" (H)   146 lb SC-T5000   56" (W) x 32" (D) x 45" (H)   177 lb SC-T7000   64" (W) x 32" (D) x 45" (H)   192 lb Dimensions and weight include printer and stand.
<b>Printing Technology</b>	Advanced MicroPiezo TFP Print Head   Variable-size Ink Droplet Technology — Smallest droplet size of 3.5 picoliters Nozzle Configuration — 720 nozzles per color (x5)   Maximum Resolution — 2880 x 1440 dpi
<b>Line Quality</b>	Line Accuracy of ±0.1%   Minimum Line Width: 0.018 mm
<b>Printer Interface and Language</b>	Includes as standard one Hi-Speed USB 2.0 (1.1 compatible) and one Gigabit Ethernet Port (10/100/1000 Base-T) Epson Precision XD and Native HPGL, HPGL/2, HP-RTL
<b>Included Software</b>	Epson Professional Imaging Print Drivers for Windows® and Macintosh®   Epson Printer Utilities   Epson Job Accounting Software   Epson LFP Print Plug-In for Microsoft® Office   AutoCAD HDI Drivers 2004 – 2013 (available via download) The Epson SureColor T-Series printers are supported by most leading third-party RIPs and workflows.
<b>Operating Systems Supported</b>	Microsoft Windows 8, Windows 7, Windows Vista® or Windows XP (32- or 64-bit), Macintosh Mountain Lion 10.8, Lion 10.7, Snow Leopard 10.6, and Leopard 10.5
<b>Media Handling</b>	SC-T3000   Single Roll from 10" to 24" wide on 2" or 3" core   Cut-Sheet from 8.27" to 24" wide SC-T5000   Single Roll from 10" to 36" wide on 2" or 3" core   Cut-Sheet from 8.27" to 36" wide SC-T7000   Single Roll from 10" to 44" wide on 2" or 3" core   Cut-Sheet from 8.27" to 44" wide All printers support rolls up to 5.9" in diameter, and rigid posterboard up to 1.5 mm thick. Borderless printing available for papers 10", 11.8", 13", 16", 17", 20.3", 23", 24", 29", 33", 36", 41" and 44" wide. Maximum printable length is limited by software application, operating system, media length, and RIP used.
<b>Epson UltraChrome XD Ink</b>	Cartridge fill volumes — 110 ml, 350 ml, or 700 ml each color x 5 colors total Ink cartridge shelf life (recommended) — 2 years from printed production date or 6 months after open
<b>What's in the Box?</b>	Printer   Stand with Integrated Stacking Catch Basket   Set of five 110 ml Ink Cartridges   Power Cord User Guide Kit (Documentation and Software)   Roll Media Adapters
<b>Electrical Requirements</b>	Voltage: AC 100 – 240 V   Frequency: 50 – 60 Hz
<b>Power Consumption</b>	Operating: SC-T3000 54 watts   SC-T5000 65 watts   SC-T7000 74 watts Sleep: Less than 3 watts   Power Off: Less than 0.4 watts
<b>Regulatory Standards</b>	UL (MET), FCC (Class A), CSA, TCSA, CE, EMC, ENERGY STAR® 2.0, and EPEAT Bronze
<b>Operating Conditions</b>	Temperature: 50° to 95°F   Relative Humidity: 20 to 80% (no condensation)
<b>Optional Accessories</b>	Internal 250GB Print Server   Take-up Reel System (SC-T7000 only)
<b>Limited Warranty and Service</b>	Standard one-year, on-site, usually next-business-day service with toll-free phone support Monday through Friday   Optional Epson Preferred™ Plus Service programs available to extend coverage for up to two years beyond the initial warranty period.

## Uncompromised Precision

With the SureColor T-Series printers, there's no need to compromise quality for speed. Imagine presentation quality D-size plots produced in as little as 25 seconds and up to 110 separate plots per hour!

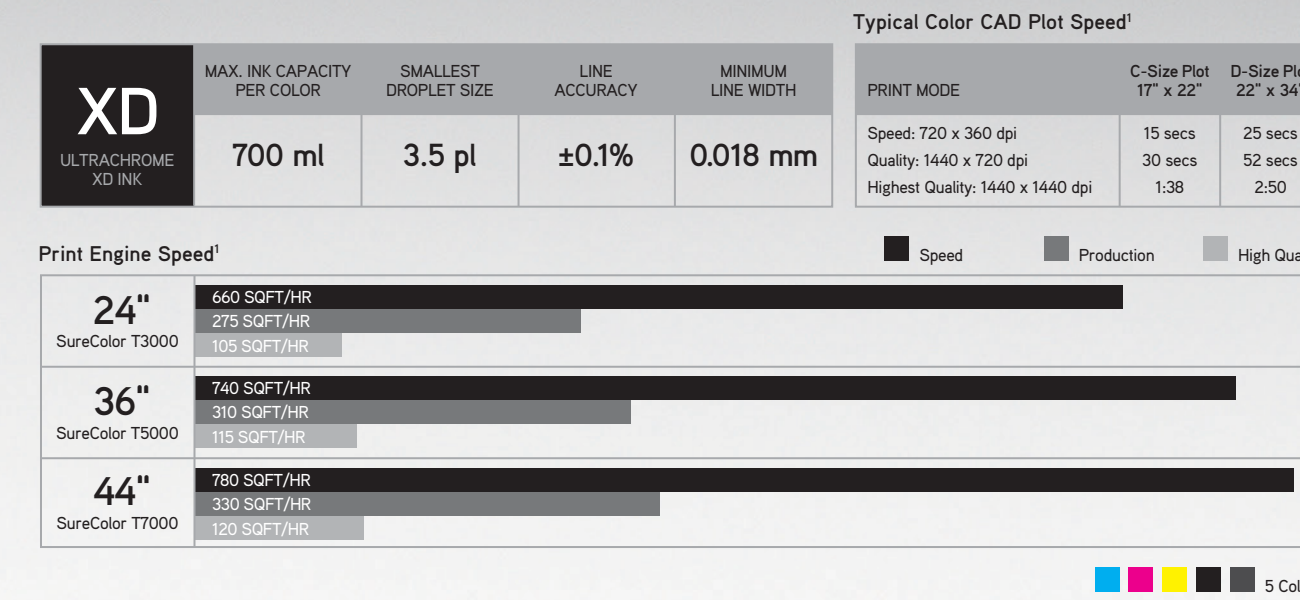
Our latest Epson MicroPiezo TFP print head technology produces better quality prints faster, and more precisely than virtually any other form of inkjet imaging. With enhanced variable-size ink droplet technology — capable of producing an extraordinarily small, 3.5 picoliter droplet, at resolutions up to 2880 x 1440 dpi — the SureColor T-Series family prints extremely precise line detail, crisp text, and true photo quality graphics.

Optimized to produce brilliant color with precise detail across a wide variety of media, Epson UltraChrome XD pigment inks represent a significant milestone in chemical engineering. SureColor T-Series prints are truly archival and are smudge and water resistant across all colors. And, because the printer has three different ink cartridge sizes, you'll be spending less time and money maintaining your ink system.

The SureColor T-Series has superior ease of use with front-loading ink and paper, while incorporating a space-saving design, allowing the printer to be placed flush against a wall. Spindle-free roll paper support simplifies roll paper loading and the color LCD control panel provides quick access to important functions along with an intuitive built-in help system. The integrated stacking print basket neatly organizes up to twenty D- or E-size prints.

And best of all, SureColor T-Series is fully supported by Epson's world-class service and support teams. Every SureColor T-Series printer comes standard with one year of free phone support and usually next-business-day on-site service. Plus, with our optional extended service programs, you can cover your SureColor T-Series printer for up to three years.

The all-new SureColor T-Series. It could be the way to print your next big idea.



<sup>1</sup> Print speeds for a single page and for square feet per hour are based on print engine speed only. Multi-page print speed is based on printing and cutting time for a 10-page A1/D-size drawing (34" W x 22" L). For A1/D-size prints, the T3000 prints slightly slower than the T5000 and T7000. Total throughput time for any print depends on workstation configuration, file size, print resolution, ink coverage, networking, etc.



# Epson UltraChrome XD Ink

Make an impression that will last. With a dedicated team of over eighty chemical engineers, Epson has developed a unique ink technology — Epson UltraChrome XD — that dries virtually in an instant with extreme smudge, fade, and water resistance. Engineered to produce professional quality prints, it delivers brilliant color and crisp lines on a broad array of media ranging from inexpensive plain paper to premium photographic papers and archival films.

Consistent, repeatable print quality over time

True photographic print quality



Enhanced color range for brilliant color output

AccuPhoto™ XD Screening technology produces outstanding print quality

Dual-Black ink technology for rich blacks on virtually any media type

Full color prints are highly smudge, fade, and water resistant

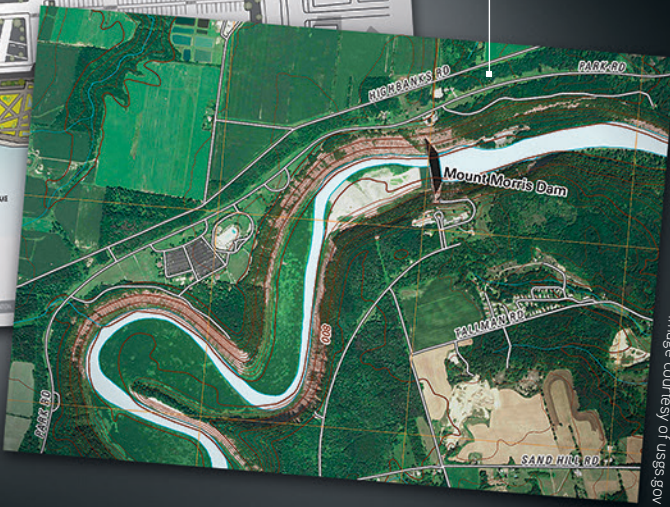


Image courtesy of usgs.gov

Precision line detail and crisp text, even on plain uncoated paper

### Archival Output

Advanced, full-color, pigment-based inks that are truly archival and extremely smudge and water resistant.



### Media Compatibility

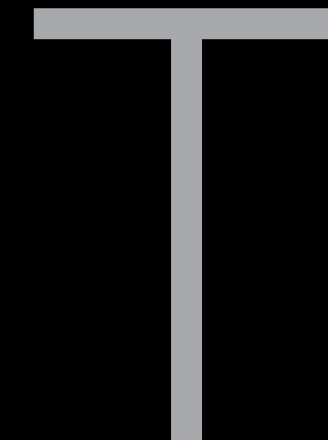
Supports a wide range of media types in rolls and sheets, and even prints directly onto posterboard up to 1.5 mm thick.



### Ink Efficiency

Reduce printing costs with front-loading ink cartridges, available in three different capacities up to 700 ml.





## Our Most Advanced Print Head

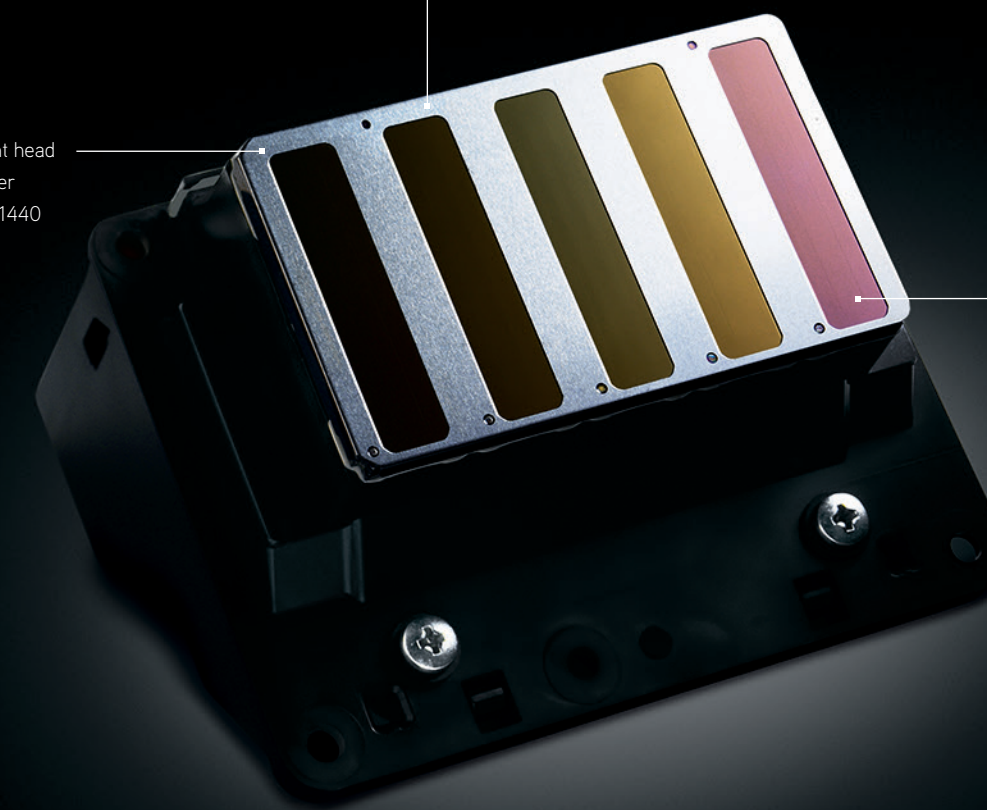
Epson has forever changed the face of photographic imaging with our latest Epson MicroPiezo TFP print head. And now we've brought the same technology to technical imaging. Developed to produce better quality prints faster and more precisely than virtually any other form of aqueous-based imaging, this print head features enhanced variable-size ink droplet technology and precise print resolutions. As a result, the SureColor T-Series family produces extremely precise line detail, crisp text and true photo quality graphics — all at outstanding print speeds.

### Epson MicroPiezo TFP Print Head

Our most advanced print head, based on our exotic Thin Film Piezo (TFP) technology, delivers extremely precise text and line art, consistently, over the life of the printer

One-inch-wide print head with 720 nozzles per color up to 2880 x 1440 dpi resolution

Enhanced variable-size ink droplet technology as small as 3.5 picoliters for outstanding photographic print quality



### Plot Precision

Line accuracy to within ±0.1% and resolution up to 2880 x 1440 dpi; drawing details are extremely crisp.



### Plot Speed

Quickly produce an A1/D-size plot in as little as 25 seconds and up to 110 A1/D-size plots per hour!



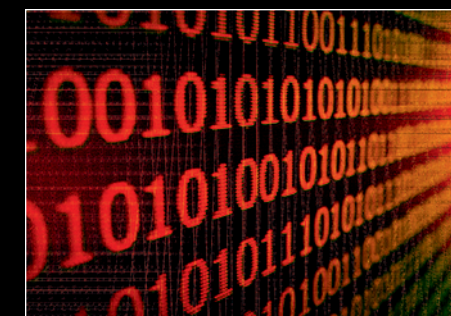
### Auto Print Stacker

Neatly organize up to 20 A1/D- or A0/E-size plain paper plots for quick retrieval.



### Precision XD Technology

Utilizing Precision XD print language, achieve optimum output from virtually any Mac® or Windows application.



### Hard Drive

An optional 250GB internal print server for enhanced workgroup productivity and ability to reprint saved jobs.



Built to Perform.™

**EPSON®**  
EXCEED YOUR VISION

**Better Products for a Better Future™**

For more information on Epson's environmental programs, go to  
[eco.epson.com](http://eco.epson.com)

**Epson America, Inc.** 3840 Kilroy Airport Way, Long Beach, CA 90806

**Epson Canada Limited** 185 Renfrew Drive, Markham, Ontario L3R 6G3

EPSON, Epson UltraChrome, MicroPiezo, SureColor and TFP are registered trademarks. EPSON Exceed Your Vision is a registered logomark and Better Products for a Better Future is a trademark of Seiko Epson Corporation. AccuPhoto and Built to Perform are trademarks and Epson Preferred is a service mark of Epson America, Inc. Mac and Macintosh are trademarks of Apple Inc., registered in the U.S. and other countries. All other product and brand names are trademarks and/or registered trademarks of their respective companies. Epson disclaims any and all rights in these marks. Copyright 2013, Epson America, Inc. CPD-37863 XXK 05/13 XX



[proimaging.epson.com](http://proimaging.epson.com)