

NEC Direct View LED-F019i (1.9mm F-Series Indoor)



NEC Direct View LED - Intelligent display solutions for a brighter world

The S[quadrat] F-Series by NEC provides crystal clear images for the ultimate visual experience. With pixel spacing options of 1.2mm, 1.5mm, 1.9mm, 2.3mm, 2.7mm & 3.8mm the optimum display resolution can be achieved regardless of viewing distance; plus, the front serviceable design allows easy access and quick maintenance when needed. Designed for vibrant and colorful content visualization, the NEC direct view indoor LED series is the ideal solution for auditoriums, reception areas, retail stores, control and meeting

rooms, museums, broadcast studios and airports or train stations. NEC offers full design & planning services plus post installation support, ensuring you get a custom tailored solution allowing you to focus on what's most important - your business

BENEFITS

Each **LED Panel** can be configured with built in data and power redundancy ensuring the display remains operational in the event of a single controller or power supply fault

Modules are front and rear serviceable allowing placement in difficult to access areas

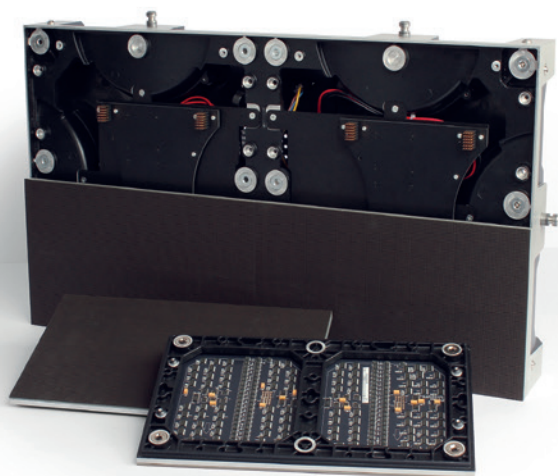
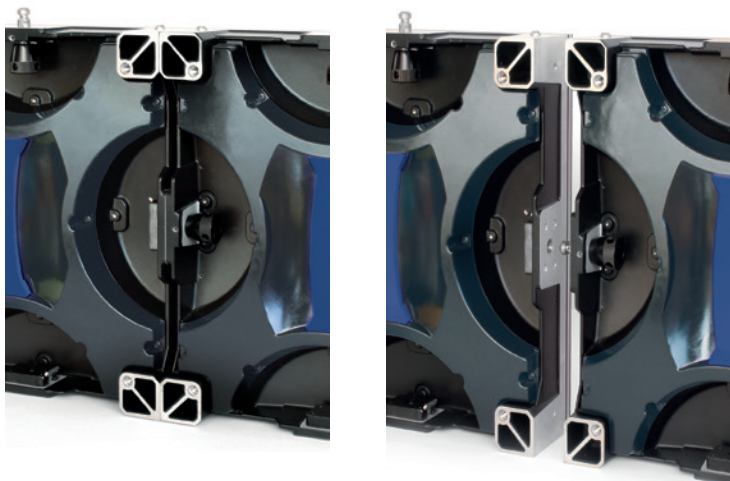
Pixel cards are upgradable to a finer pixel pitch. A Full HD 3.8mm display can be upgraded to 4K at a later date without changing the modules or mounting structure

Pixel cards are hot-swappable and can be replaced without turning the display off

Black SMD LED's provide a smooth surface, low reflectance and high contrast



NEC Direct View LED-F019i (1.9mm F Series Indoor) - Technical Specification



DISPLAY	
Panel Technology	Direct View LED
Pixel Configuration	3-1 SMD (Black)
Panel Resolution	320 x 180
Pixel Pitch	1.9mm
Brightness (typical/maximum)	264/800cd/m2
Display	80,000 hours
Contrast Ratio(typical)	3000:1
Viewing Angle	80/80 horizontal / 80/80 vertical
Dimming Capability	256 levels
Color Processing	18 bit
Displayable Colors	281 Trillion
Refresh Rate(Hz)	3000
Orientation	Landscape
Connectivity	
Input Terminals	Digital: DVI-D Dual Link in/out or HDMI External Control: RS232 / USB
External Control	USB
PowerConsumption(typical)	
On	280Watts/sqm
Max	800Watts/Sqm
Physical Specifications	
Dimensions (W x H x D) [mm]	608 x 342 x 90mm
Weight [kg]	20.9lbs (9.5kg)
Environmental Conditions	
Operating Temperature	32° to 104°f / 0° to 40°c
Environmental Conditions	10% to 90%
Storage Temperature	32° to 104°f / 0° to 40°c
Servicability	
Front & Rear Service	
IP Level	
IP30	
Accessories	
Controller	
Mounting Frame	
Pixel Card Service tool	
Onsite Installation	

All rights reserved in favor of their respective owners. All hardware and software names are brand names and/or registered trademarks of the respective manufacturers. All specifications are subject to change without notice.

©2018 NEC Display Solutions of America, Inc. and the NEC Logo are registered trademarks of NEC.

Cat.No. 25.NEC.80.GL.UN.236 | 8.15.2018

www.necdisplay.com