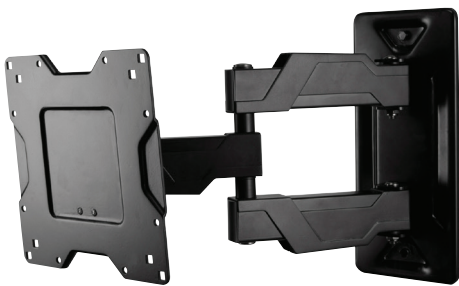




OC80FM

The OC80FM is ideal for entry-level consumers looking for a low-profile and easy-to-use large full motion mount.



PRODUCT SPECIFICATIONS*

Fits most: 37-63" TVs

Supports up to: 80 lbs (36,3 kg)

Tilt: +15° to -5°

Pan: Up to 180°

Mounting profile: 3.2" (8,2 cm)*

Maximum extension: 14" (35,7 cm)*

VESA compliance: 200x200 to 600x400

Mounting: Single-stud or solid wall

Warranty: 5 years

Color: Black



*adapter adds .2" (0,6 cm)

PRODUCT BENEFITS*

- Low 3.2" (8,2 cm) mounting profile
- Tilt, pan and swivel for maximum viewing flexibility
- Lift n' Lock™ allows you to easily attach your TV to the mount
- Arm design provides ample throw and nests centered on the wall
- Extends 14" (35,7 cm) from wall when in use and retracts to 3.2" (8,2 cm) when not in use
- Integrated cable management and plastic covers hide wires
- Allows for simple leveling adjustments post-installation
- Durable powder coat finish
- Two-tone design and modern aesthetic complements newer TVs
- Includes adapters for greater VESA compatibility
- Simple to install and use
- Ships fully assembled
- Includes complete hardware kit

*Subject to change

SERIES:



FULL MOTION



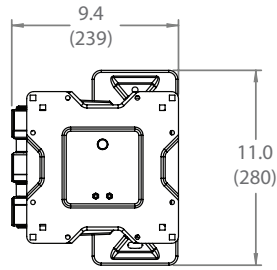
TILT



FIXED

OC80FM

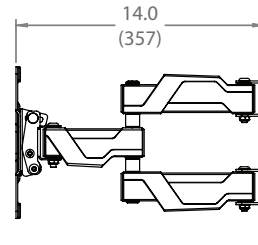
inches (mm)



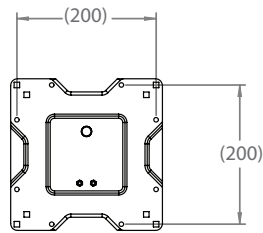
FRONT VIEW



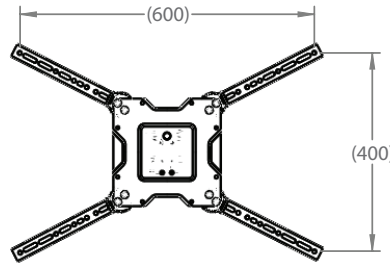
MOUNTING PROFILE



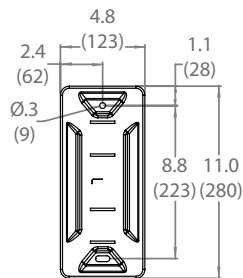
MAXIMUM EXTENSION



PANEL ATTACHMENT -
VESA COMPATABILITY (MM)



PANEL ATTACHMENT -
VESA COMPATIBILITY (mm)
WITH ADAPTERS



WALL MOUNTING

	UPC	Dimensions WxDxH inches (mm)	Wt lbs (kg)	Qty
Box	698833022070	14.2 x 12.8 x 4.5 (360x325x113)	11 (5)	--
MC	10698833022077	14.6 x 9.7 x 13.8 (370x245x350)	23.2 (10.5)	2

Box Contents	Qty
Wall plate	1
Spider46 adapter	4
Arm assembly (with cable management)	1
Monitor plate	1

Box Contents	Qty
Tilt tension handle	1
Complete wall hardware kit	1
Complete hardware kit	1
Instruction Manual	1